



Dimensions

- L** 144 M
- W** 30.48 M
- D** 8.53 M

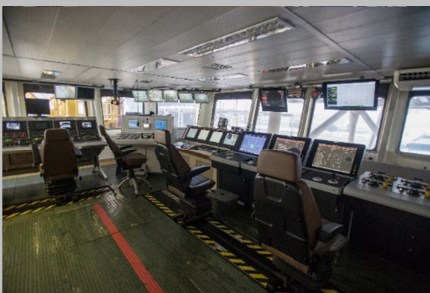
 **DLB BGL1**

This Offshore Derrick Lay Barge was constructed by Mitsui Shipyard Japan.

**Capable of Laying pipes up to 60" in offshore waters.
Deck area 1500m²**

 **Main Specifications**

Length	121.40m(400')
Breadth	30.48m(100')
Depth	8.53 m (13,8')
Deck load	7 a 28 tonnes/m ²
Main Crane	Clyde DE52 1000tons 750t fully revolving



Specifications

Propulsion	6x 2000hp DP2 Kronsberg System
Power Plant	5x Cat 3512B 1288kva each, cat3406
Tensioners	2x 160t, SAS GOUDA
A/R Winch	320t, SAS GOUDA
Fire-Line	CRC Evans
	Stingers 20m, 32m, 48m
Fuel	1.899m ³
Potable water	3.096m ³
Ballastable water	7.531m ³

Mooring

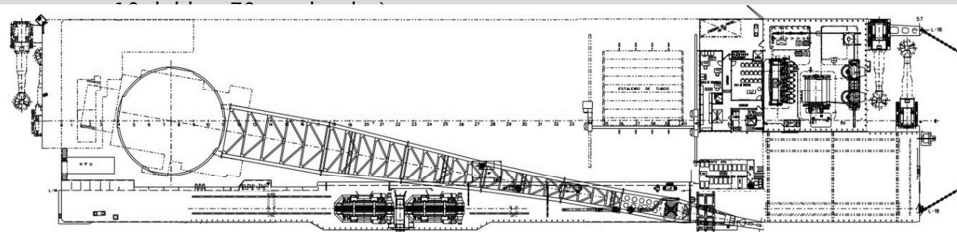
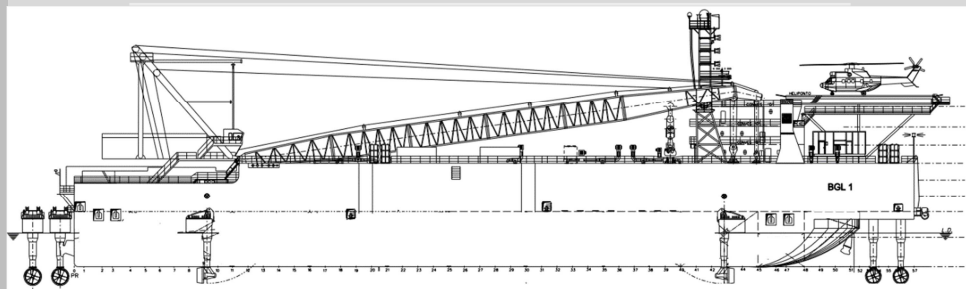
Winches American 3000M2	10x 1750m 2.1/2"-225tons line pull
Anchors	10 x Patented (10.000 kg each)

Deck Crane

American 9299	165tons, 30t @ 21m, 8,5t @ 42m
Boom Length	140'

Accommodation

Fixed Accommodation	up to 280 persons
---------------------	-------------------



Main Crane Clyde DE52 230+30+15

<Capacity>	<Radius>	<Height>
1000t (fixed)	24m	66m
750t (revolving)	23m	65m
640t	30m	64m
560t	32m	63m
500t	34m	62m
460t	35m	61m
360t	40m	60m
Aux 275t	25-48m	75-70m
Whip 45t	SWL45t	90m

Shipyard I
Av Canal São Francisco, 3000
Rio de Janeiro

Head Quarter
Rua Aguanil, 160
Rio de Janeiro RJ

Shipyard II
Cais de São Roque
Maragogipe Bahia

Tel +55 21 3226 7070
Mob +55 21 990022557
@ superbraco@gmail.com
W www.superbraco.com