



amhoist

# 900 SERIES MODEL 9299 CRAWLER CRANE WITH 77S BOOM

## LIFT RATINGS With 77S Tubular Chord Hammerhead Boom and "P-P" Counterweight (105,000 Lbs.) (47,628 kg)

### METRIC

Boom Length (Feet)	Radius In Feet	Boom Angle Degrees	Side Frames Retracted	Side Frames Extended	Ft. From Boom Point	Min. Load Line
70 feet	16	82.8	—	330000	77	9
	20	79.5	—	242420	77	7
	25	75.4	—	169940	75	5
	30	71.1	111230	130100	74	4
	35	66.7	90450	104890	72	3
	40	62.2	75870	87500	70	3
	50	52.4	56740	65050	63	2
	60	41.0	44730	51160	53	2
70	25.6	36640	41670	37	2	
80 feet	17	83.0	—	312290	87	9
	20	80.8	—	242520	87	7
	25	77.2	—	169920	86	5
	30	73.5	111120	130030	84	4
	35	69.8	90310	104790	83	3
	40	65.9	75720	87380	81	3
	50	57.8	56580	64910	75	2
	60	48.8	44570	51020	68	2
70	38.2	36310	41560	57	2	
80	23.8	30240	34660	39	1	
90 feet	19	82.5	—	264900	97	8
	20	81.9	—	242570	97	7
	25	78.7	—	169880	96	5
	30	75.4	110980	129930	95	4
	35	72.1	90160	104660	93	3
	40	68.7	75550	87240	92	3
	50	61.7	56400	64750	87	2
	60	54.2	44390	50850	81	2
70	45.8	36130	41390	72	2	
80	35.9	30090	34520	60	1	
90	22.4	25460	29280	41	1	
100 feet	20	82.7	—	242570	107	7
	25	79.8	—	169780	106	5
	30	76.9	110790	129780	105	4
	35	73.9	89940	104480	104	3
	40	70.9	75320	87040	102	3
	50	64.8	56160	64530	98	2
	60	58.2	44140	50620	93	2
	70	51.2	35890	41160	85	2
80	43.3	29860	34300	76	1	
90	34.0	25250	29080	63	1	
100	21.2	21590	24950	43	1	
110 feet	21	82.8	—	223560	117	7
	25	80.7	142780	169670	116	5
	30	78.1	110600	129620	115	4
	35	75.4	89730	104290	114	3
	40	72.7	75090	86830	113	3
	50	67.2	55910	64290	109	2
	60	61.4	43880	50380	104	2
	70	55.3	35630	40910	98	2
80	48.6	29610	34050	90	1	
90	41.2	25010	28840	80	1	
100	32.3	21370	24740	66	1	
110	20.1	18400	21410	45	1	
120 feet	22	82.9	—	207210	127	6
	25	81.5	142660	169600	126	5
	30	79.1	110450	129500	126	4
	35	76.7	89560	104150	124	3
	40	74.2	74910	86670	123	3
	50	69.2	55710	64110	120	2
60	64.0	43680	50180	115	2	

Boom Length (Meter)	Radius In Meter	Boom Angle Degrees	Side Frames Retracted	Side Frames Extended	M From Boom Point	Min. Load Line
21.3 meters	4.9	82.8	—	149690	23.5	9
	6.1	79.5	—	109960	23.5	7
	7.6	75.4	—	77080	22.9	5
	9.1	71.1	50450	59010	22.6	4
	10.7	66.7	41030	47580	21.9	3
	12.2	62.2	34410	39690	21.3	3
	15.2	52.4	25740	29510	19.2	2
	18.3	41.0	20290	23210	16.2	2
	21.3	25.6	16620	18900	11.3	2
	24.4 meters	5.2	83.0	—	141650	26.5
6.1		80.8	—	110010	26.5	7
7.6		77.2	—	77080	26.2	5
9.1		73.5	50400	58980	25.6	4
10.7		69.8	40960	47530	25.3	3
12.2		65.9	34350	39640	24.7	3
15.2		57.8	25660	29440	22.9	2
18.3		48.8	20220	23140	20.7	2
21.3		38.2	16470	18850	17.4	2
24.4		23.8	13720	15720	11.9	1
27.4 meters	5.8	82.5	—	120160	29.6	8
	6.1	81.9	—	110030	29.6	7
	7.6	78.7	—	77060	29.3	5
	9.1	75.4	50340	58940	29.0	4
	10.7	72.1	40900	47470	28.3	3
	12.2	68.7	34270	39570	28.0	3
	15.2	61.7	25580	29370	26.5	2
	18.3	54.2	20140	23070	24.7	2
	21.3	45.8	16390	18770	21.9	2
	24.4	35.9	13650	15660	18.3	1
27.4	22.4	11550	13280	12.5	1	
30.5 meters	6.1	82.7	—	110030	32.6	7
	7.6	79.8	—	77010	32.3	5
	9.1	76.9	50250	58870	32.0	4
	10.7	73.9	40800	47390	31.7	3
	12.2	70.9	34170	39480	31.1	3
	15.2	64.8	25470	29270	29.9	2
	18.3	58.2	20020	22960	28.3	2
	21.3	51.2	16280	18670	25.9	2
	24.4	43.3	13540	15560	23.2	1
	27.4	34.0	11450	13190	19.2	1
30.5	21.2	9790	11320	13.1	1	
33.5 meters	6.4	82.8	—	101410	35.7	7
	7.6	80.7	64770	76960	35.4	5
	9.1	78.1	50170	58800	35.1	4
	10.7	75.4	40700	47310	34.7	3
	12.2	72.7	34060	39390	34.4	3
	15.2	67.2	25360	29160	33.2	2
	18.3	61.4	19900	22850	31.7	2
	21.3	55.3	16160	18560	29.9	2
	24.4	48.6	13430	15450	27.4	1
	27.4	41.2	11340	13080	24.4	1
30.5	32.3	9690	11220	20.1	1	
33.5	20.1	8350	9710	13.7	1	
36.6 meters	6.7	82.9	—	93990	38.7	6
	7.6	81.5	64710	76930	38.4	5
	9.1	79.1	50100	58740	38.4	4
	10.7	76.7	40620	47240	37.8	3
	12.2	74.2	33980	39310	37.5	3
	15.2	69.2	25270	29080	36.6	2
18.3	64.0	19810	22760	35.1	2	

(Continued)

# LIFT RATINGS (cont.)

With 77S Tubular Chord Hammerhead Boom

## METRIC

Boom Length (Feet)	Radius In Feet	Boom Angle Degrees	Side Frames Retracted	Side Frames Extended	Ft. From Boom Point	Min. Load Line
120 feet cont.	70	58.5	35430	40720	110	2
	80	52.7	29410	33860	103	1
	90	46.4	24810	28650	94	1
	100	39.3	21180	24560	83	1
	110	30.9	18240	21250	69	1
	120	19.2	15780	18490	47	1
130 feet	24	82.6	151140	180460	137	5
	25	82.2	142470	169460	137	5
	30	79.9	110230	129310	136	4
	35	77.7	89310	103930	135	3
	40	75.4	74640	86420	134	3
	50	70.8	55430	63840	131	2
	60	66.1	43380	49900	127	2
	70	61.2	35130	40430	122	2
	80	56.0	29100	33570	115	1
	90	50.5	24510	28360	108	1
	100	44.5	20890	24270	99	1
	110	37.7	17950	20970	87	1
	120	29.6	15510	18230	71	1
	130	18.4	13440	15920	48	1
140 feet	25	82.7	142280	169310	147	5
	30	80.7	110000	129120	146	4
	35	78.6	89060	103700	145	3
	40	76.5	74380	86180	144	3
	50	72.3	55140	63570	141	2
	60	67.9	43090	49620	137	2
	70	63.4	34820	40140	133	2
	80	58.7	28800	33270	127	1
	90	53.8	24210	28070	121	1
	100	48.5	20590	23980	112	1
	110	42.8	17650	20680	102	1
	120	36.2	15230	17950	90	1
	130	28.5	13170	15660	74	1
	140	17.7	11400	13680	50	1
150 feet	26	82.8	134280	159340	157	5
	30	81.3	109750	128910	156	4
	35	79.4	88790	103460	155	3
	40	77.4	74090	85910	154	3
	50	73.5	54830	63280	152	2
	60	69.5	42770	49310	148	2
	70	65.3	34500	39820	144	2
	80	61.0	28470	32950	139	1
	90	56.6	23880	27740	133	1
	100	51.8	20260	23660	125	1
	110	46.8	17330	20360	117	1
	120	41.2	14900	17640	106	1
	130	35.0	12860	15350	93	1
	140	27.5	11110	13400	76	1
150	17.1	9580	11690	51	1	
160 feet	27	82.9	127030	150360	167	5
	30	81.8	109510	128700	166	4
	35	80.0	88520	103220	165	3
	40	78.2	73810	85650	164	3
	50	74.5	54530	62990	162	2
	60	70.8	42460	49010	159	2
	70	67.0	34180	39510	155	2
	80	63.0	28150	32640	150	1
	90	58.9	23550	27430	145	1
	100	54.6	19930	23340	138	1
	110	50.1	17000	20040	130	1
	120	45.2	14580	17320	121	1
	130	39.8	12540	15040	110	1
	140	33.8	10800	13090	96	1
150	26.6	9290	11400	79	1	
160	16.5	7950	9910	53	1	
170 feet	28	83.0	120450	142260	176	4
	30	82.3	109310	128520	176	4
	35	80.6	88300	103010	175	3
	40	78.9	73570	85420	175	3
	50	75.5	54270	62750	172	2
	60	72.0	42190	48750	169	2
	70	68.4	33900	39240	166	2
	80	64.7	27870	32360	161	1
	90	60.9	23270	27150	156	1
	100	57.0	19650	23060	150	1
	110	52.8	16720	19760	143	1
	120	48.5	14300	17050	135	1
	130	43.8	12270	14770	125	1
	140	38.6	10530	12820	113	1
150	32.8	9020	11140	99	1	
160	25.7	7700	9670	81	1	
170	16.0	6520	8360	54	1	

Boom Length (Meter)	Radius In Meter	Boom Angle Degrees	Side Frames Retracted	Side Frames Extended	M From Boom Point	Min. Load Line
36.6 meters cont.	21.3	58.5	16070	18470	33.5	2
	24.4	52.7	13340	15360	31.4	1
	27.4	46.4	11250	13000	28.7	1
	30.5	39.3	9610	11140	25.3	1
	33.5	30.9	8270	9640	21.0	1
	36.6	19.2	7160	8390	14.3	1
39.6 meters	7.3	82.6	68560	81860	41.8	5
	7.6	82.2	64620	76870	41.8	5
	9.1	79.9	50000	58660	41.5	4
	10.7	77.7	40510	47140	41.1	3
	12.2	75.4	33860	39200	40.8	3
	15.2	70.8	25140	28960	39.9	2
	18.3	66.1	19680	22630	38.7	2
	21.3	61.2	15930	18340	37.2	2
	24.4	56.0	13200	15230	35.1	1
	27.4	50.5	11120	12860	32.9	1
	30.5	44.5	9480	11010	30.2	1
	33.5	37.7	8140	9510	26.5	1
	36.6	29.6	7040	8270	21.6	1
	39.6	18.4	6100	7220	14.6	1
42.7 meters	7.6	82.7	64540	76800	44.8	5
	9.1	80.7	49900	58570	44.5	4
	10.7	78.6	40400	47040	44.2	3
	12.2	76.5	33740	39090	43.9	3
	15.2	72.3	25010	28840	43.0	2
	18.3	67.9	19550	22510	41.8	2
	21.3	63.4	15790	18210	40.5	2
	24.4	58.7	13060	15090	38.7	1
	27.4	53.8	10980	12730	36.9	1
	30.5	48.5	9340	10880	34.1	1
	33.5	42.8	8010	9380	31.1	1
	36.6	36.2	6910	8140	27.4	1
	39.6	28.5	5970	7100	22.6	1
	42.7	17.7	5170	6210	15.2	1
45.7 meters	7.9	82.8	60910	72280	47.9	5
	9.1	81.3	49780	58470	47.5	4
	10.7	79.4	40280	46930	47.2	3
	12.2	77.4	33610	38970	46.9	3
	15.2	73.5	24870	28700	46.3	2
	18.3	69.5	19400	22370	45.1	2
	21.3	65.3	15650	18060	43.9	2
	24.4	61.0	12910	14950	42.4	1
	27.4	56.6	10830	12580	40.5	1
	30.5	51.8	9190	10730	38.1	1
	33.5	46.8	7860	9240	35.7	1
	36.6	41.2	6760	8000	32.3	1
	39.6	35.0	5830	6960	28.3	1
	42.7	27.5	5040	6080	23.2	1
45.7	17.1	4350	5300	15.5	1	
48.8 meters	8.2	82.9	57620	68200	50.9	5
	9.1	81.8	49670	58380	50.6	4
	10.7	80.0	40150	46820	50.3	3
	12.2	78.2	33480	38850	50.0	3
	15.2	74.5	24730	28570	49.4	2
	18.3	70.8	19260	22230	48.5	2
	21.3	67.0	15500	17920	47.2	2
	24.4	63.0	12770	14810	45.7	1
	27.4	58.9	10680	12440	44.2	1
	30.5	54.6	9040	10590	42.1	1
	33.5	50.1	7710	9090	39.6	1
	36.6	45.2	6610	7860	36.9	1
	39.6	39.8	5690	6820	33.5	1
	42.7	33.8	4900	5940	29.3	1
45.7	26.6	4210	5170	24.1	1	
48.8	16.5	3610	4500	16.2	1	
51.8 meters	8.5	83.0	54640	64530	53.6	4
	9.1	82.3	49580	58300	53.6	4
	10.7	80.6	40050	46730	53.3	3
	12.2	78.9	33370	38750	53.3	3
	15.2	75.5	24620	28460	52.4	2
	18.3	72.0	19140	22110	51.5	2
	21.3	68.4	15380	17800	50.6	2
	24.4	64.7	12640	14680	49.1	1
	27.4	60.9	10560	12320	47.5	1
	30.5	57.0	8910	10460	45.7	1
	33.5	52.8	7580	8960	43.6	1
	36.6	48.5	6490	7730	41.1	1
	39.6	43.8	5570	6700	38.1	1
	42.7	38.6	4780	5820	34.4	1
45.7	32.8	4090	5050	30.2	1	
48.8	25.7	3490	4390	24.7	1	
51.8	16.0	2960	3790	16.5	1	

(Continued)

# LIFT RATINGS (cont.)

## With 77S Tubular Chord Hammerhead Boom

### METRIC

Boom Length (Feet)	Radius In Feet	Boom Angle Degrees	Side Frames Retracted	Side Frames Extended	Ft. From Boom Point	Min. Load Line
180 feet	30	82.7	109050	128300	186	4
	35	81.1	88020	102760	186	3
	40	79.5	73270	85150	185	3
	50	76.3	53950	62450	183	2
	60	73.0	41860	48430	180	2
	70	69.6	33570	38920	176	2
	80	66.2	27530	32030	172	1
	90	62.7	22930	26810	168	1
	100	59.0	19300	22720	162	1
	110	55.2	16370	19420	155	1
	120	51.2	13960	16710	148	1
	130	47.0	11920	14430	139	1
	140	42.5	10190	12490	129	1
	150	37.5	8690	10810	117	1
160	31.8	7370	9350	102	1	
170	25.0	6210	8050	83	1	
180	15.5	5150	6880	55	1	
190 feet	31	82.8	103900	122090	196	4
	35	81.6	87750	102510	196	3
	40	80.1	72980	84880	195	3
	50	77.0	53640	62150	193	2
	60	73.9	41530	48120	190	2
	70	70.7	33240	38600	187	2
	80	67.5	27190	31700	183	1
	90	64.2	22590	26480	179	1
	100	60.8	18960	22390	174	1
	110	57.3	16030	19090	167	1
	120	53.6	13610	16370	161	1
	130	49.8	11580	14090	153	1
	140	45.7	9850	12150	143	1
	150	41.3	8350	10480	133	1
160	36.4	7040	9020	120	1	
170	30.9	5880	7730	105	1	
180	24.3	4850	6580	85	1	
190	15.1	3900	5540	57	1	
200 feet	32	82.9	99120	116350	206	4
	35	82.0	87460	102250	206	3
	40	80.6	72680	84600	205	3
	50	77.7	53320	61840	203	2
	60	74.7	41200	47800	201	2
	70	71.7	32890	38260	198	2
	80	68.7	26840	31360	194	1
	90	65.6	22230	26130	190	1
	100	62.4	18600	22040	185	1
	110	59.1	15670	18730	179	1
	120	55.7	13260	16020	173	1
	130	52.2	11220	13740	165	1
	140	48.4	9490	11800	157	1
	150	44.5	7990	10130	148	1
160	40.2	6690	8670	136	1	
170	35.5	5530	7380	123	1	
180	30.1	4500	6240	108	1	
190	23.7	3580	5210	87	1	
200	14.7	—	4270	58	1	
210 feet	33	83.0	94660	111030	216	3
	35	82.4	87180	102000	216	3
	40	81.0	72380	84320	215	3
	50	78.3	53000	61540	213	2
	60	75.5	40870	47480	211	2
	70	72.6	32550	37930	208	2
	80	69.8	26490	31020	205	1
	90	66.8	21880	25790	201	1
	100	63.8	18250	21690	196	1
	110	60.7	15320	18390	191	1
	120	57.6	12900	15670	185	1
	130	54.3	10870	13390	178	1
	140	50.8	9140	11450	170	1
	150	47.2	7640	9780	162	1
160	43.3	6340	8320	152	1	
170	39.2	5190	7040	140	1	
180	34.6	4160	5900	126	1	
190	29.3	3240	4880	110	1	
200	23.1	—	3950	89	1	
210	14.3	—	3100	59	1	
220 feet	35	82.8	86930	101770	226	3
	40	81.4	72120	84070	225	3
	50	78.8	52720	61260	224	2
	60	76.1	40570	47190	221	2
	70	73.5	32250	37630	219	2
	80	70.7	26180	30720	215	1
	90	67.9	21570	25490	212	1
100	65.1	17940	21380	207	1	

Boom Length (Meter)	Radius In Meter	Boom Angle Degrees	Side Frames Retracted	Side Frames Extended	M From Boom Point	Min. Load Line
54.9 meters	9.1	82.7	49470	58200	56.7	4
	10.7	81.1	39930	46610	56.7	3
	12.2	79.5	33240	38620	56.4	3
	15.2	76.3	24470	28330	55.8	2
	18.3	73.0	18990	21970	54.9	2
	21.3	69.6	15230	17650	53.6	2
	24.4	66.2	12490	14530	52.4	1
	27.4	62.7	10400	12160	51.2	1
	30.5	59.0	8750	10310	49.4	1
	33.5	55.2	7430	8810	47.2	1
	36.6	51.2	6330	7580	45.1	1
	39.6	47.0	5410	6550	42.4	1
	42.7	42.5	4620	5670	39.3	1
	45.7	37.5	3940	4900	35.7	1
48.8	31.8	3340	4240	31.1	1	
51.8	25.0	2820	3650	25.3	1	
54.9	15.5	2340	3120	16.8	1	
57.9 meters	9.4	82.8	47130	55380	59.7	4
	10.7	81.6	39800	46500	59.7	3
	12.2	80.1	33100	38500	59.4	3
	15.2	77.0	24330	28190	58.8	2
	18.3	73.9	18840	21830	57.9	2
	21.3	70.7	15080	17510	57.0	2
	24.4	67.5	12330	14380	55.8	1
	27.4	64.2	10250	12010	54.6	1
	30.5	60.8	8600	10160	53.0	1
	33.5	57.3	7270	8660	50.9	1
	36.6	53.6	6170	7430	49.1	1
	39.6	49.8	5250	6390	46.6	1
	42.7	45.7	4470	5510	43.6	1
	45.7	41.3	3790	4750	40.5	1
48.8	36.4	3190	4090	36.6	1	
51.8	30.9	2670	3510	32.0	1	
54.9	24.3	2200	2980	25.9	1	
57.9	15.1	1770	2510	17.4	1	
61.0 meters	9.8	82.9	44960	52780	62.8	4
	10.7	82.0	39670	46380	62.8	3
	12.2	80.6	32970	38370	62.5	3
	15.2	77.7	24190	28050	61.9	2
	18.3	74.7	18690	21680	61.3	2
	21.3	71.7	14920	17350	60.4	2
	24.4	68.7	12170	14220	59.1	1
	27.4	65.6	10080	11850	57.9	1
	30.5	62.4	8440	10000	56.4	1
	33.5	59.1	7110	8500	54.6	1
	36.6	55.7	6010	7270	52.7	1
	39.6	52.2	5090	6230	50.3	1
	42.7	48.4	4300	5350	47.9	1
	45.7	44.5	3620	4590	45.1	1
48.8	40.2	3030	3930	41.5	1	
51.8	35.5	2510	3350	37.5	1	
54.9	30.1	2040	2830	32.9	1	
57.9	23.7	1620	2360	26.5	1	
61.0	14.7	—	1940	17.7	1	
64.0 meters	10.1	83.0	42940	50360	65.8	3
	10.7	82.4	39540	46270	65.8	3
	12.2	81.0	32830	38250	65.5	3
	15.2	78.3	24040	27910	64.9	2
	18.3	75.5	18540	21540	64.3	2
	21.3	72.6	14760	17210	63.4	2
	24.4	69.8	12020	14070	62.5	1
	27.4	66.8	9920	11700	61.3	1
	30.5	63.8	8280	9840	59.7	1
	33.5	60.7	6950	8340	58.2	1
	36.6	57.6	5850	7110	56.4	1
	39.6	54.3	4930	6070	54.3	1
	42.7	50.8	4150	5190	51.8	1
	45.7	47.2	3470	4440	49.4	1
48.8	43.3	2880	3770	46.3	1	
51.8	39.2	2350	3190	42.7	1	
54.9	34.6	1890	2680	38.4	1	
57.9	29.3	1470	2210	33.5	1	
61.0	23.1	—	1790	27.1	1	
64.0	14.3	—	1410	18.0	1	
67.1 meters	10.7	82.8	39430	46160	68.9	3
	12.2	81.4	32710	38130	68.6	3
	15.2	78.8	23910	27790	68.3	2
	18.3	76.1	18400	21410	67.4	2
	21.3	73.5	14630	17070	66.8	2
	24.4	70.7	11880	13930	65.5	1
	27.4	67.9	9780	11560	64.6	1
30.5	65.1	8140	9700	63.1	1	

(Continued)

# LIFT RATINGS (cont.)

## With 77S Tubular Chord Hammerhead Boom

Boom Length (Feet)	Radius In Feet	Boom Angle Degrees	Side Frames Retracted	Side Frames Extended	Ft. From Boom Point	Min. Load Line
220 feet	110	62.2	15010	18070	202	1
	120	59.2	12580	15350	197	1
	130	56.1	10550	13070	190	1
	140	52.9	8820	11130	183	1
	150	49.6	7330	9460	175	1
	160	46.0	6020	8010	166	1
	170	42.3	4870	6730	155	1
	180	38.2	3850	5590	143	1
	190	33.7	—	4570	129	1
	200	28.6	—	3660	113	1
230 feet	36	82.8	83270	94300	236	3
	40	81.8	71810	83790	235	3
	50	79.3	52390	60960	234	2
	60	76.8	40230	46860	232	2
	70	74.2	31900	37300	229	2
	80	71.6	25830	30380	226	1
	90	68.9	21210	25130	222	1
	100	66.2	17580	21030	218	1
	110	63.5	14640	17720	213	1
	120	60.7	12220	14990	208	1
	130	57.8	10190	12710	202	1
	140	54.8	8450	10770	195	1
	150	51.7	6960	9100	188	1
	160	48.4	5660	7650	179	1
	170	45.0	4510	6370	170	1
	180	41.3	3490	5230	159	1
190	37.3	—	4220	147	1	
200	33.0	—	3300	132	1	
240 feet	37	82.9	7840	86290	246	3
	40	82.2	71510	83510	246	3
	50	79.7	52070	60650	244	2
	60	77.3	39900	46540	242	2
	70	74.9	31560	36960	239	1
	80	72.4	25480	30040	236	1
	90	69.9	20860	24790	233	1
	100	67.3	17220	20680	229	1
	110	64.7	14280	17370	225	1
	120	62.0	11860	14640	220	1
	130	59.3	9830	12360	214	1
	140	56.4	8090	10420	208	1
	150	53.5	6600	8750	201	1
	160	50.5	5300	7290	193	1
	170	47.3	4150	6010	184	1
	180	44.0	3130	4880	174	1
190	40.4	—	3860	163	1	

## METRIC

Boom Length (Meter)	Radius In Meter	Boom Angle Degrees	Side Frames Retracted	Side Frames Extended	M From Boom Point	Min. Load Line
67.1 meters	33.5	62.2	6810	8200	61.6	1
	36.6	59.2	5710	6960	60.0	1
	39.6	56.1	4790	5930	57.9	1
	42.7	52.9	4000	5050	55.8	1
	45.7	49.6	3320	4290	53.3	1
	48.8	46.0	2730	3630	50.6	1
	51.8	42.3	2210	3050	47.2	1
	54.9	38.2	1750	2540	43.6	1
	57.9	33.7	—	2070	39.3	1
	61.0	28.6	—	1660	34.4	1
70.1 meters	11.0	82.8	37770	42770	71.9	3
	12.2	81.8	32570	38010	71.6	3
	15.2	79.3	23760	27650	71.3	2
	18.3	76.8	18250	21260	70.7	2
	21.3	74.2	14470	16920	69.8	2
	24.4	71.6	11720	13780	68.9	1
	27.4	68.9	9620	11400	67.7	1
	30.5	66.2	7970	9540	66.4	1
	33.5	63.5	6640	8040	64.9	1
	36.6	60.7	5540	6800	63.4	1
	39.6	57.8	4620	5770	61.6	1
	42.7	54.8	3830	4890	59.4	1
	45.7	51.7	3160	4130	57.3	1
	48.8	48.4	2570	3470	54.6	1
	51.8	45.0	2050	2890	51.8	1
	54.9	41.3	1580	2370	48.5	1
57.9	37.3	—	1910	44.8	1	
61.0	33.0	—	1500	40.2	1	
73.2 meters	11.3	82.9	36220	39140	75.0	3
	12.2	82.2	32440	37880	75.0	3
	15.2	79.7	23620	27510	74.4	2
	18.3	77.3	18100	21110	73.8	2
	21.3	74.9	14320	16770	72.8	1
	24.4	72.4	11560	13630	71.9	1
	27.4	69.9	9460	11240	71.0	1
	30.5	67.3	7810	9380	69.8	1
	33.5	64.7	6480	7880	68.6	1
	36.6	62.0	5380	6640	67.1	1
	39.6	59.3	4460	5610	65.2	1
	42.7	56.4	3670	4730	63.4	1
	45.7	53.5	2990	3970	61.3	1
	48.8	50.5	2400	3310	58.8	1
	51.8	47.3	1880	2730	56.1	1
	54.9	44.0	1420	2210	53.0	1
57.9	40.4	—	1750	49.7	1	

# LIFT RATINGS With 77S Tubular Chord Tapered

## Tip Boom and "P-P" Counterweight (105,000 Lbs.) (47,628 kg)

Boom Length (Feet)	Radius In Feet	Boom Angle Degrees	Side Frames Retracted	Side Frames Extended	Ft. From Boom Point	Min. Load Line
100	21	80.8	—	222850	105	6
	25	78.5	—	171840	105	5
	30	75.6	—	132100	104	4
	35	72.6	—	106980	102	3
	40	69.6	77980	89650	100	3
	50	63.3	58950	67290	96	2
	60	56.7	47030	53490	90	2
	70	49.5	38850	44110	83	2
	80	41.5	32880	37310	73	2
	90	31.9	28320	32140	60	1
100	18.3	24720	28070	38	1	
110	23	80.6	—	194950	115	6
	25	79.6	—	171710	115	5
	30	76.9	—	131940	114	4
	35	74.2	92270	106780	113	3
	40	71.5	77740	89440	111	3
	50	65.9	58700	67060	107	2
	60	60.0	46780	53250	102	2
	70	53.8	38590	43860	96	2
	80	47.1	32620	37060	87	1
	90	39.5	28070	31900	77	1
	100	30.3	24480	27850	62	1
110	17.5	21560	24560	40	1	

## METRIC

Boom Length (Meter)	Radius In Meter	Boom Angle Degrees	Side Frames Retracted	Side Frames Extended	M From Boom Point	Min. Load Line
30.5	6.4	80.8	—	101080	32.0	6
	7.6	78.5	—	77950	32.0	5
	9.1	75.6	—	59920	31.7	4
	10.7	72.6	—	48530	31.1	3
	12.2	69.6	35370	40670	30.5	3
	15.2	63.3	26740	30520	29.3	2
	18.3	56.7	21330	24260	27.4	2
	21.3	49.5	17620	20010	25.3	2
	24.4	41.5	14910	16920	22.3	2
	27.4	31.9	12850	14580	18.3	1
30.5	18.3	11210	12730	11.6	1	
33.5	7.0	80.6	—	88430	35.1	6
	7.6	79.6	—	77890	35.1	5
	9.1	76.9	—	59850	34.7	4
	10.7	74.2	41850	48440	34.4	3
	12.2	71.5	35260	40570	33.8	3
	15.2	65.9	26630	30420	32.6	2
	18.3	60.0	21220	24150	31.1	2
	21.3	53.8	17500	19890	29.3	2
	24.4	47.1	14800	16810	26.5	1
	27.4	39.5	12730	14470	23.5	1
	30.5	30.3	11100	12630	18.9	1
33.5	17.5	9780	11140	12.2	1	

(Continued)

# LIFT RATINGS (cont.)

## With 77S Tubular Chord Tapered Tip Boom

### METRIC

Boom Length (Feet)	Radius In Feet	Boom Angle Degrees	Side Frames Retracted	Side Frames Extended	Ft. From Boom Point	Min. Load Line
120 feet	24	80.9	—	182480	125	5
	25	80.4	—	171570	125	5
	30	78.0	—	131750	124	4
	35	75.6	92040	106580	123	3
	40	73.1	77500	89220	122	3
	50	68.0	58450	66830	118	2
	60	62.8	46510	53000	113	2
	70	57.2	38330	43610	108	2
	80	51.4	32360	36810	100	1
	90	44.9	27810	31650	92	1
	100	37.7	24230	27600	80	1
	110	29.0	21320	24330	65	1
120	16.7	18900	21620	41	1	
130 feet	26	80.7	—	161670	135	5
	30	78.9	112520	131540	134	4
	35	76.7	91770	106340	133	3
	40	74.4	77220	88960	132	3
	50	69.8	58160	66550	129	2
	60	65.0	46220	52720	125	2
	70	60.0	38030	43320	119	2
	80	54.8	32060	36510	113	1
	90	49.2	27510	31360	105	1
	100	43.1	23930	27310	96	1
	110	36.2	21020	24040	83	1
	120	27.9	18620	21340	68	1
130	16.0	16590	19070	43	1	
140 feet	27	81.0	—	152760	145	5
	30	79.7	112270	131320	145	4
	35	77.7	91500	106100	144	3
	40	75.5	76940	88700	142	3
	50	71.3	57870	66280	139	2
	60	66.9	45920	52430	136	2
	70	62.4	37730	43030	131	2
	80	57.6	31760	36220	125	1
	90	52.6	27210	31060	118	1
	100	47.3	23630	27010	110	1
	110	41.4	20730	23750	99	1
	120	34.8	18330	21050	87	1
130	26.8	16310	18790	70	1	
140	15.5	14580	16850	44	1	
150 feet	29	80.8	117330	137620	155	4
	30	80.4	112070	131140	155	4
	35	78.5	91280	105900	154	3
	40	76.5	76710	88490	153	3
	50	72.6	57620	66040	150	2
	60	68.5	45670	52190	146	2
	70	64.3	37470	42780	142	2
	80	60.0	31500	35970	137	1
	90	55.5	26950	30810	130	1
	100	50.7	23370	26760	123	1
	110	45.6	20470	23500	114	1
	120	40.0	18080	20810	103	1
130	33.6	16070	18550	90	1	
140	25.9	14350	16630	72	1	
150	14.9	12850	14950	45	1	
160 feet	31	80.7	106950	124980	165	4
	35	79.2	90990	105630	164	3
	40	77.4	76410	88210	163	3
	50	73.7	57310	65740	160	2
	60	69.9	45340	51880	157	2
	70	66.1	37140	42460	153	2
	80	62.1	31170	35650	148	1
	90	57.9	26620	30490	142	1
	100	53.6	23040	26440	136	1
	110	49.0	20140	23170	128	1
	120	44.1	17750	20480	118	1
	130	38.7	15740	18230	107	1
140	32.5	14020	16310	93	1	
150	25.1	12540	14650	75	1	
160	14.5	11230	13190	47	1	
170 feet	32	80.9	102210	119290	175	4
	35	79.9	90700	105370	174	3
	40	78.1	76110	87930	173	3
	50	74.7	56990	65440	171	2
	60	71.1	45020	51570	168	2
	70	67.5	36820	42150	164	2
	80	63.8	30840	35330	159	1
	90	60.0	26290	30160	154	1
	100	56.1	22710	26110	148	1
	110	51.9	19810	22850	141	1
	120	47.5	17420	20160	132	1
	130	42.7	15410	17910	122	1

Boom Length (Meter)	Radius In Meter	Boom Angle Degrees	Side Frames Retracted	Side Frames Extended	M From Boom Point	Min. Load Line
36.6 meters	7.3	80.9	—	82770	38.1	5
	7.6	80.4	—	77820	38.1	5
	9.1	78.0	—	59760	37.8	4
	10.7	75.6	41750	48340	37.5	3
	12.2	73.1	35150	40470	37.2	3
	15.2	68.0	26510	30310	36.0	2
	18.3	62.8	21100	24040	34.4	2
	21.3	57.2	17390	19780	32.9	2
	24.4	51.4	14680	16700	30.5	1
	27.4	44.9	12610	14360	28.0	1
	30.5	37.7	10990	12520	24.4	1
	33.5	29.0	9670	11040	19.8	1
36.6	16.7	8570	9810	12.5	1	
39.6 meters	7.9	80.7	—	73330	41.1	5
	9.1	78.9	51040	59670	40.8	4
	10.7	76.7	41630	48240	40.5	3
	12.2	74.4	35030	40350	40.2	3
	15.2	69.8	26380	30190	39.3	2
	18.3	65.0	20970	23910	38.1	2
	21.3	60.0	17250	19650	36.3	2
	24.4	54.8	14540	16560	34.4	1
	27.4	49.2	12480	14220	32.0	1
	30.5	43.1	10850	12390	29.3	1
	33.5	36.2	9530	10900	25.3	1
	36.6	27.9	8450	9680	20.7	1
39.6	16.0	7530	8650	13.1	1	
42.7 meters	8.2	81.0	—	69290	44.2	5
	9.1	79.7	50930	59570	44.2	4
	10.7	77.7	41500	48130	43.9	3
	12.2	75.5	34900	40230	43.3	3
	15.2	71.3	26250	30060	42.4	2
	18.3	66.9	20830	23780	41.5	2
	21.3	62.4	17110	19520	39.9	2
	24.4	57.6	14410	16430	38.1	1
	27.4	52.6	12340	14090	36.0	1
	30.5	47.3	10720	12250	33.5	1
	33.5	41.4	9400	10770	30.2	1
	36.6	34.8	8310	9550	26.5	1
39.6	26.8	7400	8520	21.3	1	
42.7	15.5	6610	7640	13.4	1	
45.7 meters	8.8	80.8	53220	62420	47.2	4
	9.1	80.4	50830	59490	47.2	4
	10.7	78.5	41400	48040	46.9	3
	12.2	76.5	34800	40140	46.6	3
	15.2	72.6	26140	29960	45.7	2
	18.3	68.5	20720	23670	44.5	2
	21.3	64.3	17000	19410	43.3	2
	24.4	60.0	14290	16320	41.8	1
	27.4	55.5	12220	13980	39.6	1
	30.5	50.7	10600	12140	37.5	1
	33.5	45.6	9290	10660	34.7	1
	36.6	40.0	8200	9440	31.4	1
39.6	33.6	7290	8410	27.4	1	
42.7	25.9	6510	7540	21.9	1	
45.7	14.9	5830	6780	13.7	1	
48.8 meters	9.4	80.7	48510	56690	50.3	4
	10.7	79.2	41270	47910	50.0	3
	12.2	77.4	34660	40010	49.7	3
	15.2	73.7	26000	29820	48.8	2
	18.3	69.9	20570	23530	47.9	2
	21.3	66.1	16850	19260	46.6	2
	24.4	62.1	14140	16170	45.1	1
	27.4	57.9	12070	13830	43.3	1
	30.5	53.6	10450	11990	41.5	1
	33.5	49.0	9140	10510	39.0	1
	36.6	44.1	8050	9290	36.0	1
	39.6	38.7	7140	8270	32.6	1
42.7	32.5	6360	7400	28.3	1	
45.7	25.1	5690	6650	22.9	1	
48.8	14.5	5090	5980	14.3	1	
51.8 meters	9.8	80.9	46360	54110	53.3	4
	10.7	79.9	41140	47800	53.0	3
	12.2	78.1	34520	39890	52.7	3
	15.2	74.7	25850	29680	52.1	2
	18.3	71.1	20420	23390	51.2	2
	21.3	67.5	16700	19120	50.0	2
	24.4	63.8	13990	16030	48.5	1
	27.4	60.0	11930	13680	46.9	1
	30.5	56.1	10300	11840	45.1	1
	33.5	51.9	8990	10360	43.0	1
	36.6	47.5	7900	9140	40.2	1
	39.6	42.7	6990	8120	37.2	1

(Continued)

# LIFT RATINGS (cont.)

With 77S Tubular Chord Tapered Tip Boom

Boom Length (Feet)	Radius In Feet	Boom Angle Degrees	Side Frames Retracted	Side Frames Extended	Ft. From Boom Point	Min. Load Line
170 feet cont.	140	37.5	13700	15990	110	1
	150	31.5	12220	14330	96	1
	160	24.3	10920	12890	77	1
	170	14.0	9770	11600	48	1
180 feet	34	80.7	93950	109380	184	3
	35	80.4	90400	105090	184	3
	40	78.8	75790	87630	183	3
	50	75.5	56660	65130	181	2
	60	72.2	44680	51240	178	2
	70	68.9	36470	41810	175	2
	80	65.4	30490	34990	170	1
	90	61.8	25940	29820	165	1
	100	58.2	22360	25770	160	1
	110	54.3	19460	22500	153	1
	120	50.3	17070	19820	145	1
	130	46.0	15060	17560	136	1
	140	41.4	13350	15650	126	1
	150	36.4	11870	13990	113	1
160	30.6	10580	12550	98	1	
170	23.6	9440	11280	79	1	
180	13.6	8410	10140	49	1	
190 feet	35	80.9	90090	104810	194	3
	40	79.4	75480	87340	194	3
	50	76.3	56330	64820	191	2
	60	73.2	44350	50920	189	2
	70	70.0	36130	41480	185	2
	80	66.8	30150	34650	181	1
	90	63.4	25590	29480	177	1
	100	60.0	22010	25430	171	1
	110	56.5	19110	22160	165	1
	120	52.8	16720	19470	158	1
	130	48.9	14720	17220	150	1
	140	44.7	13010	15310	141	1
	150	40.3	11530	13650	130	1
	160	35.4	10240	12220	117	1
170	29.8	9100	10950	101	1	
180	23.0	8090	9820	81	1	
190	13.3	7170	8800	50	1	
200 feet	37	80.8	83400	96850	204	3
	40	79.9	75200	87080	204	3
	50	77.0	56040	64540	202	2
	60	74.1	44050	50630	199	2
	70	71.1	35830	41190	196	2
	80	68.0	29840	34350	192	1
	90	64.9	25290	29180	188	1
	100	61.7	21700	25130	183	1
	110	58.4	18810	21860	177	1
	120	54.9	16420	19170	170	1
	130	51.3	14410	16920	163	1
	140	47.6	12700	15000	154	1
	150	43.6	11220	13350	145	1
	160	39.2	9940	11920	133	1
170	34.4	8800	10650	120	1	
180	29.0	7790	9530	104	1	
190	22.4	6890	8520	83	1	
200	12.9	6060	7610	51	1	
210 feet	38	81.0	80170	93080	214	3
	40	80.4	74880	86770	214	3
	50	77.6	55700	64210	212	2
	60	74.8	43700	50290	209	2
	70	72.0	35480	40840	206	2
	80	69.1	29490	34010	203	1
	90	66.1	24930	28830	199	1
	100	63.1	21340	24770	194	1
	110	60.0	18440	21500	189	1
	120	56.8	16050	18810	183	1
	130	53.5	14050	16560	176	1
	140	50.0	12340	14650	168	1
	150	46.4	10860	13000	159	1
	160	42.5	9580	11560	149	1
170	38.2	8440	10300	137	1	
180	33.6	7440	9180	123	1	
190	28.3	6540	8170	106	1	
200	21.8	5720	7270	85	1	
210	12.6	4980	6440	53	1	
220 feet	40	80.9	74560	86470	224	3
	50	78.2	55370	63890	222	2
	60	75.5	43360	49960	220	2
	70	72.8	35130	40500	217	2

## METRIC

Boom Length (Meter)	Radius In Meter	Boom Angle Degrees	Side Frames Retracted	Side Frames Extended	M From Boom Point	Min. Load Line
51.8 meters cont.	42.7	37.5	6210	7250	33.5	1
	45.7	31.5	5540	6500	29.3	1
	48.8	24.3	4950	5850	23.5	1
	51.8	14.0	4430	5260	14.6	1
54.9 meters	10.4	80.7	42620	49610	56.1	3
	10.7	80.4	41010	47670	56.1	3
	12.2	78.8	34380	39750	55.8	3
	15.2	75.5	25700	29540	55.2	2
	18.3	72.2	20270	23240	54.3	2
	21.3	68.9	16540	18970	53.3	2
	24.4	65.4	13830	15870	51.8	1
	27.4	61.8	11770	13530	50.3	1
	30.5	58.2	10140	11690	48.8	1
	33.5	54.3	8830	10210	46.6	1
	36.6	50.3	7740	8990	44.2	1
	39.6	46.0	6830	7970	41.5	1
	42.7	41.4	6060	7100	38.4	1
	45.7	36.4	5380	6350	34.4	1
48.8	30.6	4800	5690	29.9	1	
51.8	23.6	4280	5120	24.1	1	
54.9	13.6	3810	4600	14.9	1	
57.9 meters	10.7	80.9	40860	47540	59.1	3
	12.2	79.4	34240	39620	59.1	3
	15.2	76.3	25550	29400	58.2	2
	18.3	73.2	20120	23100	57.6	2
	21.3	70.0	16390	18820	56.4	2
	24.4	66.8	13680	15720	55.2	1
	27.4	63.4	11610	13370	53.9	1
	30.5	60.0	9980	11540	52.1	1
	33.5	56.5	8670	10050	50.3	1
	36.6	52.8	7580	8830	48.2	1
	39.6	48.9	6680	7810	45.7	1
	42.7	44.7	5900	6940	43.0	1
	45.7	40.3	5230	6190	39.6	1
	48.8	35.4	4640	5540	35.7	1
51.8	29.8	4130	4970	30.8	1	
54.9	23.0	3670	4450	24.7	1	
57.9	13.3	3250	3990	15.2	1	
61.0 meters	11.3	80.8	37830	43930	62.2	3
	12.2	79.9	34110	39500	62.2	3
	15.2	77.0	25420	29280	61.6	2
	18.3	74.1	19980	22970	60.7	2
	21.3	71.1	16250	18680	59.7	2
	24.4	68.0	13540	15580	58.5	1
	27.4	64.9	11470	13240	57.3	1
	30.5	61.7	9840	11400	55.8	1
	33.5	58.4	8530	9920	53.9	1
	36.6	54.9	7450	8700	51.8	1
	39.6	51.3	6540	7670	49.7	1
	42.7	47.6	5760	6800	46.9	1
	45.7	43.6	5090	6060	44.2	1
	48.8	39.2	4510	5410	40.5	1
51.8	34.4	3990	4830	36.6	1	
54.9	29.0	3530	4320	31.7	1	
57.9	22.4	3130	3860	25.3	1	
61.0	12.9	2750	3450	15.5	1	
64.0 meters	11.6	81.0	36370	42220	65.2	3
	12.2	80.4	33970	39360	65.2	3
	15.2	77.6	25270	29130	64.6	2
	18.3	74.8	19820	22810	63.7	2
	21.3	72.0	16090	18530	62.8	2
	24.4	69.1	13380	15430	61.9	1
	27.4	66.1	11310	13080	60.7	1
	30.5	63.1	9680	11240	59.1	1
	33.5	60.0	8360	9750	57.6	1
	36.6	56.8	7280	8530	55.8	1
	39.6	53.5	6370	7510	53.6	1
	42.7	50.0	5600	6650	51.2	1
	45.7	46.4	4930	5900	48.5	1
	48.8	42.5	4350	5240	45.4	1
51.8	38.2	3830	4670	41.8	1	
54.9	33.6	3370	4160	37.5	1	
57.9	28.3	2970	3710	32.3	1	
61.0	21.8	2590	3300	25.9	1	
64.0	12.6	2260	2920	16.2	1	
6.71 meters	12.2	80.9	33820	39220	68.3	3
	15.2	78.2	25120	28980	67.7	2
	18.3	75.5	19670	22660	67.1	2
	21.3	72.8	15930	18370	66.1	2

(Continued)

# LIFT RATINGS (cont.)

With 77S Tubular Chord Tapered Tip Boom

## METRIC

Boom Length (Feet)	Radius In Feet	Boom Angle Degrees	Side Frames Retracted	Side Frames Extended	Ft. From Boom Point	Min. Load Line
220 feet cont.	80	70.1	29130	33660	214	1
	90	67.3	24570	28480	210	1
	100	64.4	20990	24420	205	1
	110	61.5	18090	21150	200	1
	120	58.5	15700	18460	194	1
	130	55.4	13690	16210	188	1
	140	52.2	11980	14290	181	1
	150	48.8	10510	12640	172	1
	160	45.2	9220	11210	163	1
	170	41.4	8090	9940	152	1
	180	37.3	7090	8830	140	1
	190	32.8	6190	7830	126	1
200	27.6	5380	6920	109	1	
210	21.3	4640	6110	87	1	
220	12.3	3960	5350	54	1	
230 feet	42	80.8	69520	80590	234	3
	50	78.7	55020	63560	232	2
	60	76.2	43000	49620	230	2
	70	73.6	34770	40150	227	2
	80	71.0	28770	33310	224	1
	90	68.3	24210	28120	221	1
	100	65.6	20620	24060	216	1
	110	62.9	17720	20790	211	1
	120	60.0	15330	18100	206	1
	130	57.1	13320	15840	200	1
	140	54.1	11610	13930	193	1
	150	50.9	10140	12280	185	1
	160	47.7	8850	10840	177	1
	170	44.2	7720	9580	167	1
180	40.5	6720	8460	156	1	
190	36.5	5820	7460	144	1	
200	32.1	5010	6560	129	1	
210	27.0	4280	5750	111	1	
220	20.9	3610	5010	89	1	
230	12.0	2990	4320	55	1	
240 feet	43	80.9	67030	77720	244	3
	50	79.2	54680	63240	243	2
	60	76.8	42650	49280	240	2
	70	74.3	34410	39810	238	2
	80	71.8	28410	32960	235	1
	90	69.3	23840	27770	231	1
	100	66.7	20250	23700	227	1
	110	64.1	17350	20430	223	1
	120	61.4	14960	17730	217	1
	130	58.6	12950	15480	212	1
	140	55.8	11240	13560	205	1
	150	52.8	9770	11910	198	1
	160	49.8	8480	10480	190	1
	170	46.6	7350	9220	181	1
180	43.2	6350	8100	171	1	
190	39.6	5460	7100	160	1	
200	35.7	4650	6200	147	1	
210	31.4	3920	5390	132	1	
220	26.4	3250	4650	114	1	
230	20.4	2640	3970	90	1	
240	11.8	—	3340	56	1	
250 feet	45	80.8	62740	72730	254	2
	50	79.6	54370	62930	253	2
	60	77.3	42330	48970	251	2
	70	74.9	34090	39490	248	1
	80	72.6	28080	32630	245	1
	90	70.1	23510	27440	242	1
	100	67.7	19920	23370	238	1
	110	65.2	17020	20100	234	1
	120	62.6	14630	17400	229	1
	130	60.0	12620	15150	223	1
	140	57.3	10910	13230	217	1
	150	54.6	9430	11580	210	1
	160	51.7	8150	10150	203	1
	170	48.7	7020	8890	195	1
	180	45.6	6020	7770	185	1
	190	42.3	5130	6770	175	1
200	38.8	4320	5880	163	1	
210	34.9	3590	5070	150	1	
220	30.7	2930	4330	134	1	
230	25.9	—	3650	116	1	
240	20.0	—	3030	92	1	
260 feet	46	80.9	60550	70240	264	2
	50	80.0	54020	62600	263	2
	60	77.8	41980	48620	261	2
	70	75.5	33720	39140	259	2

Boom Length (Meter)	Radius In Meter	Boom Angle Degrees	Side Frames Retracted	Side Frames Extended	M From Boom Point	Min. Load Line
67.1 meters cont.	24.4	70.1	13210	15270	65.2	1
	27.4	67.3	11140	12920	64.0	1
	30.5	64.4	9520	11080	62.5	1
	33.5	61.5	8210	9590	61.0	1
	36.6	58.5	7120	8370	59.1	1
	39.6	55.4	6210	7350	57.3	1
	42.7	52.2	5430	6480	55.2	1
	45.7	48.8	4770	5730	52.4	1
	48.8	45.2	4180	5080	49.7	1
	51.8	41.4	3670	4510	46.3	1
	54.9	37.3	3220	4010	42.7	1
	57.9	32.8	2810	3550	38.4	1
61.0	27.6	2440	3140	33.2	1	
64.0	21.3	2100	2770	26.5	1	
67.1	12.3	1800	2430	16.5	1	
70.1 meters	12.8	80.8	31530	36560	71.3	3
	15.2	78.7	24960	28830	70.7	2
	18.3	76.2	19500	22510	70.1	2
	21.3	73.6	15770	18210	69.2	2
	24.4	71.0	13050	15110	68.3	1
	27.4	68.3	10980	12760	67.4	1
	30.5	65.6	9350	10910	65.8	1
	33.5	62.9	8040	9430	64.3	1
	36.6	60.0	6950	8210	62.8	1
	39.6	57.1	6040	7190	61.0	1
	42.7	54.1	5270	6320	58.8	1
	45.7	50.9	4600	5570	56.4	1
	48.8	47.7	4010	4920	53.9	1
	51.8	44.2	3500	4350	50.9	1
54.9	40.5	3050	3840	47.5	1	
57.9	36.5	2640	3380	43.9	1	
61.0	32.1	2270	2980	39.3	1	
64.0	27.0	1940	2610	33.8	1	
67.1	20.9	1640	2270	27.1	1	
70.1	12.0	1360	1960	16.8	1	
73.2 meters	13.1	80.9	30400	35250	74.4	3
	15.2	79.2	24800	28690	74.1	2
	18.3	76.8	19350	22350	73.2	2
	21.3	74.3	15610	18060	72.5	2
	24.4	71.8	12890	14950	71.6	1
	27.4	69.3	10810	12600	70.4	1
	30.5	66.7	9190	10750	69.2	1
	33.5	64.1	7870	9270	68.0	1
	36.6	61.4	6790	8040	66.1	1
	39.6	58.6	5870	7020	64.6	1
	42.7	55.8	5100	6150	62.5	1
	45.7	52.8	4430	5400	60.4	1
	48.8	49.8	3850	4750	57.9	1
	51.8	46.6	3330	4180	55.2	1
54.9	43.2	2880	3670	52.1	1	
57.9	39.6	2480	3220	48.8	1	
61.0	35.7	2110	2810	44.8	1	
64.0	31.4	1780	2440	40.2	1	
67.1	26.4	1470	2110	34.7	1	
70.1	20.4	1200	1800	27.4	1	
73.2	11.8	—	1520	17.1	1	
76.2 meters	13.7	80.8	28460	32990	77.4	2
	15.2	79.6	24660	28550	77.1	2
	18.3	77.3	19200	22210	76.5	2
	21.3	74.9	15460	17910	75.6	2
	24.4	72.6	12740	14800	74.7	1
	27.4	70.1	10660	12450	73.8	1
	30.5	67.7	9040	10600	72.5	1
	33.5	65.2	7720	9120	71.3	1
	36.6	62.6	6640	7890	69.8	1
	39.6	60.0	5720	6870	68.0	1
	42.7	57.3	4950	6000	66.1	1
	45.7	54.6	4280	5250	64.0	1
	48.8	51.7	3700	4600	61.9	1
	51.8	48.7	3180	4030	59.4	1
	54.9	45.6	2730	3520	56.4	1
	57.9	42.3	2330	3070	53.3	1
61.0	38.8	1960	2670	49.7	1	
64.0	34.9	1630	2300	45.7	1	
67.1	30.7	1330	1960	40.8	1	
70.1	25.9	—	1660	35.4	1	
73.2	20.0	—	1370	28.0	1	
79.2 meters	14.0	80.9	27470	31860	80.5	2
	15.2	80.0	24500	28400	80.2	2
	18.3	77.8	19040	22050	79.6	2
	21.3	75.5	15300	17750	78.9	2

(Continued)

# LIFT RATINGS (cont.)

With 77S Tubular Chord Tapered Tip Boom

Boom Length (Feet)	Radius In Feet	Boom Angle Degrees	Side Frames Retracted	Side Frames Extended	Ft. From Boom Point	Min. Load Line
260 feet cont.	80	73.2	27720	32280	256	1
	90	70.9	23140	27080	252	1
	100	68.6	19550	23010	249	1
	110	66.2	16650	19730	245	1
	120	63.8	14250	17040	240	1
	130	61.3	12240	14780	235	1
	140	58.7	10530	12860	229	1
	150	56.1	9060	11210	223	1
	160	53.4	7770	9770	216	1
	170	50.6	6650	8510	208	1
	180	47.7	5640	7400	199	1
	190	44.7	4750	6400	190	1
	200	41.4	3950	5510	179	1
	210	38.0	3220	4700	167	1
220	34.2	2560	3960	153	1	
230	30.1	—	—	3290	137	1
240	25.4	—	—	2670	118	1
270 feet	48	80.8	56790	64920	273	2
	50	80.4	53680	62270	273	2
	60	78.3	41620	48280	271	2
	70	76.1	33370	38790	269	2
	80	73.9	27350	31920	266	1
	90	71.7	22780	26720	263	1
	100	69.4	19180	22650	260	1
	110	67.1	16280	19370	256	1
	120	64.8	13880	16670	251	1
	130	62.4	11870	14410	246	1
	140	60.0	10160	12490	241	1
	150	57.5	8690	10840	235	1
	160	55.0	7400	9410	228	1
	170	52.3	6270	8150	221	1
180	49.6	5270	7030	212	1	
190	46.8	4380	6030	203	1	
200	43.8	3580	5140	194	1	
210	40.6	2850	4330	183	1	
220	37.2	—	—	3600	170	1
230	33.6	—	—	2920	156	1
280 feet	49	81.0	54850	59730	283	2
	50	80.8	53330	59730	283	2
	60	78.7	41260	47930	281	2
	70	76.6	33000	38430	279	2
	80	74.5	26980	31560	277	1
	90	72.3	22400	26350	274	1
	100	70.2	18800	22280	270	1
	110	68.0	15900	19000	266	1
	120	65.8	13500	16300	262	1
	130	63.5	11490	14040	257	1
	140	61.2	9780	12120	252	1
	150	58.8	8310	10470	246	1
	160	56.4	7020	9030	240	1
	170	53.9	5890	7770	233	1
180	51.3	4890	6650	225	1	
190	48.7	4000	5650	217	1	
200	45.9	3190	4760	208	1	
210	43.0	—	—	3950	198	1
220	39.9	—	—	3220	186	1
290 feet	51	80.9	51530	55070	293	2
	60	79.1	40910	47590	292	2
	70	77.1	32640	38080	289	2
	80	75.0	26610	31200	287	2
	90	73.0	22030	25990	284	1
	100	70.9	18430	21910	281	1
	110	68.8	15520	18630	277	1
	120	66.7	13130	15930	273	1
	130	64.5	11120	13670	268	1
	140	62.3	9400	11740	263	1
	150	60.0	7930	10090	258	1
	160	57.7	6640	8660	252	1
	170	55.3	5510	7390	245	1
	180	52.9	4510	6280	238	1
190	50.4	3620	5280	230	1	
200	47.8	2820	4390	221	1	
210	45.0	—	—	3580	212	1
220	42.2	—	—	2850	201	1

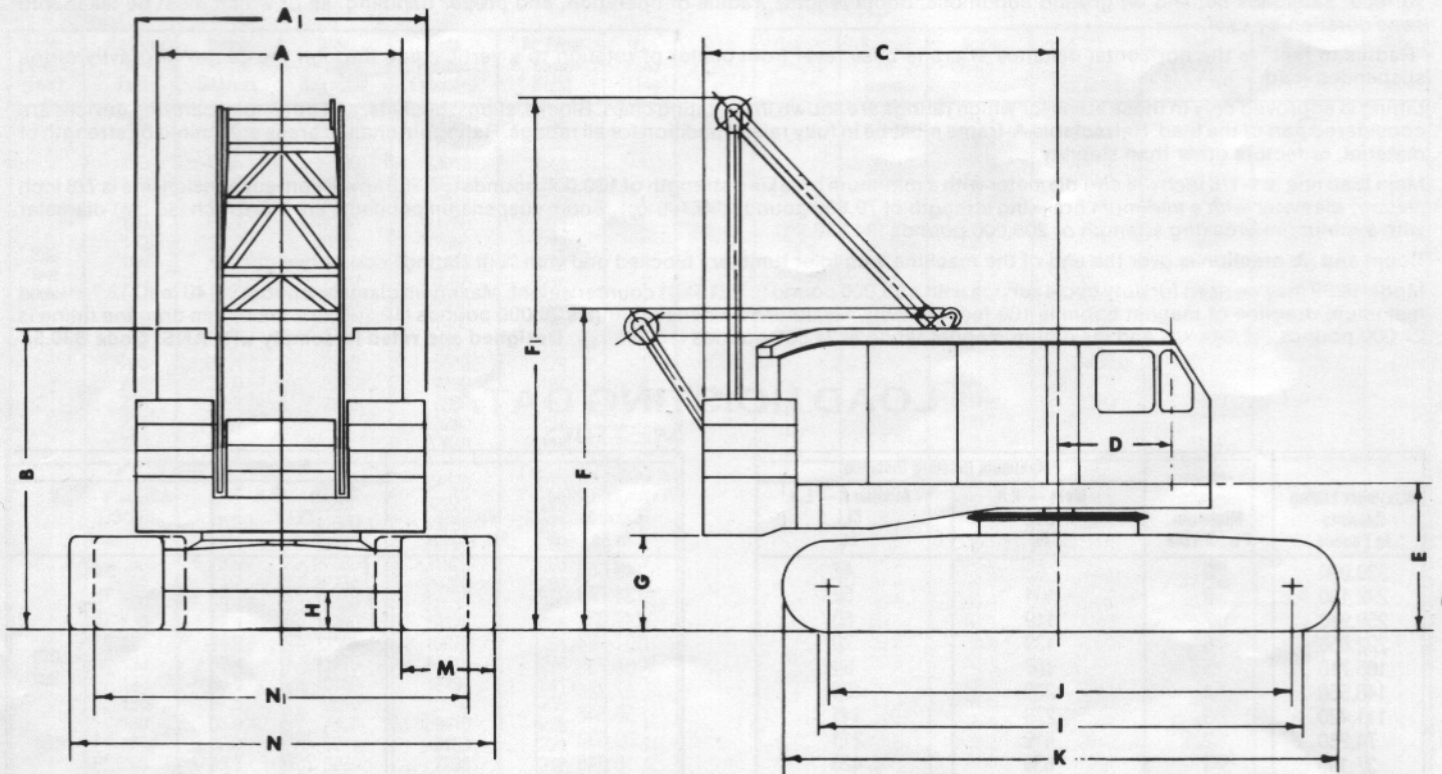
## METRIC

Boom Length (Meter)	Radius In Meter	Boom Angle Degrees	Side Frames Retracted	Side Frames Extended	M From Boom Point	Min. Load Line
79.2 meters cont.	24.4	73.2	12570	14640	78.0	1
	27.4	70.9	10500	12280	76.8	1
	30.5	68.6	8870	10440	75.9	1
	33.5	66.2	7550	8950	74.7	1
	36.6	63.8	6460	7730	73.2	1
	39.6	61.3	5550	6700	71.6	1
	42.7	58.7	4780	5830	69.8	1
	45.7	56.1	4110	5080	68.0	1
	48.8	53.4	3520	4430	65.8	1
	51.8	50.6	3020	3860	63.4	1
	54.9	47.7	2560	3360	60.7	1
	57.9	44.7	2150	2900	57.9	1
	61.0	41.4	1790	2500	54.6	1
	64.0	38.0	1460	2130	50.9	1
67.1	34.2	1160	1800	46.6	1	
70.1	30.1	—	—	1490	41.8	1
73.2	25.4	—	—	1210	36.0	1
82.3 meters	14.6	80.8	25760	29450	83.2	2
	15.2	80.4	24350	28250	83.2	2
	18.3	78.3	18880	21900	82.6	2
	21.3	76.1	15140	17600	82.0	2
	24.4	73.9	12410	14480	81.1	1
	27.4	71.7	10330	12120	80.2	1
	30.5	69.4	8700	10270	79.2	1
	33.5	67.1	7380	8790	78.0	1
	36.6	64.8	6300	7560	76.5	1
	39.6	62.4	5380	6540	75.0	1
	42.7	60.0	4610	5670	73.5	1
	45.7	57.5	3940	4920	71.6	1
	48.8	55.0	3360	4270	69.5	1
	51.8	52.3	2840	3700	67.4	1
54.9	49.6	2390	3190	64.6	1	
57.9	46.8	1990	2740	61.9	1	
61.0	43.8	1620	2330	59.1	1	
64.0	40.6	1290	1960	55.8	1	
67.1	37.2	—	—	1630	51.8	1
70.1	33.6	—	—	1320	47.5	1
85.3 meters	14.9	81.0	24880	27090	86.3	2
	15.2	80.8	24190	27090	86.3	2
	18.3	78.7	18720	21740	85.6	2
	21.3	76.6	14970	17430	85.0	2
	24.4	74.5	12240	14320	84.4	1
	27.4	72.3	10160	11950	83.5	1
	30.5	70.2	8530	10110	82.3	1
	33.5	68.0	7210	8620	81.1	1
	36.6	65.8	6120	7390	79.9	1
	39.6	63.5	5210	6370	78.3	1
	42.7	61.2	4440	5500	76.8	1
	45.7	58.8	3770	4750	75.0	1
	48.8	56.4	3180	4100	73.2	1
	51.8	53.9	2670	3520	71.0	1
54.9	51.3	2220	3020	68.6	1	
57.9	48.7	1810	2560	66.1	1	
61.0	45.9	1450	2160	63.4	1	
64.0	43.0	—	—	1790	60.4	1
67.1	39.9	—	—	1460	56.7	1
88.4 meters	15.5	80.9	23370	24980	89.3	2
	18.3	79.1	18560	21590	89.0	2
	21.3	77.1	14810	17270	88.1	2
	24.4	75.0	12070	14150	87.5	1
	27.4	73.0	9990	11790	86.6	1
	30.5	70.9	8360	9940	85.6	1
	33.5	68.8	7040	8450	84.4	1
	36.6	66.7	5960	7230	83.2	1
	39.6	64.5	5040	6200	81.7	1
	42.7	62.3	4260	5330	80.2	1
	45.7	60.0	3600	4580	78.6	1
	48.8	57.7	3010	3930	76.8	1
	51.8	55.3	2500	3350	74.7	1
	54.9	52.9	2050	2850	72.5	1
57.9	50.4	1640	2400	70.1	1	
61.0	47.8	1280	1990	67.4	1	
64.0	45.0	—	—	1620	64.6	1
67.1	42.2	—	—	1290	61.3	1

(Continued)



# AMERICAN MODEL 9299 CRAWLER CRANE



## GENERAL DIMENSIONS

	Ft.	M		Ft.	M
A. Width of cab	11'0"	3.45	H. Minimum ground clearance under crawler base	1'9"	.53
A <sub>1</sub> . Width over counterweight	13'2"	4.11	I. Crawler bearing length	22'1-1/2"	6.74
B. Height over cab	13'7-1/8"	4.14	J. Center to center crawler tumbler	20'9-1/2"	6.34
C. Tailswing	17'0"	5.18	K. Overall length of crawlers	24'10-1/2"	7.60
D. Center of pivot to center of boom foot	5'0-3/4"	1.54	M. Width of tread shoes	30"	7.62
E. Ground to center boom foot	6'9-1/8"	2.06	N. Overall width over crawlers - Extended	18'9"	5.71
F. Height over A-frame, Lowered	14'6-3/4"	4.43	N <sub>1</sub> . Overall width over crawlers - Retracted	16'3"	4.95
F <sub>1</sub> . Height over A-frame, Raised	24'6-1/8"	7.47			
G. Ground to bottom of counterweight	4'4-3/8"	1.32			

## PERFORMANCE

TRAVEL SPEED	0.8 MPH	1.29 KPH
SWING SPEED	2.28 RPM	2.28 RPM
SINGLE LINE SPEED:		
Crane, Clam	165 FPM	50.1 MPM
Dragline	145 FPM	44.2 MPM
Magnet, Drag-Hoist	200 FPM	61.0 MPM
Third Drum	192 FPM	58.5 MPM
or	142 FPM	43.3 MPM
LINE PULL:		
Crane, Clam	40,000 lbs. SLP	18144 kg
Dragline	45,000 lbs. SLP	20412 kg
Magnet, Drag-Hoist	33,000 lbs. SLP	14968 kg
Third Drum	15,000 lbs. SLP	6804 kg
or	21,000 lbs. SLP	9525 kg

Performance figures are based on machine equipped with standard engine.

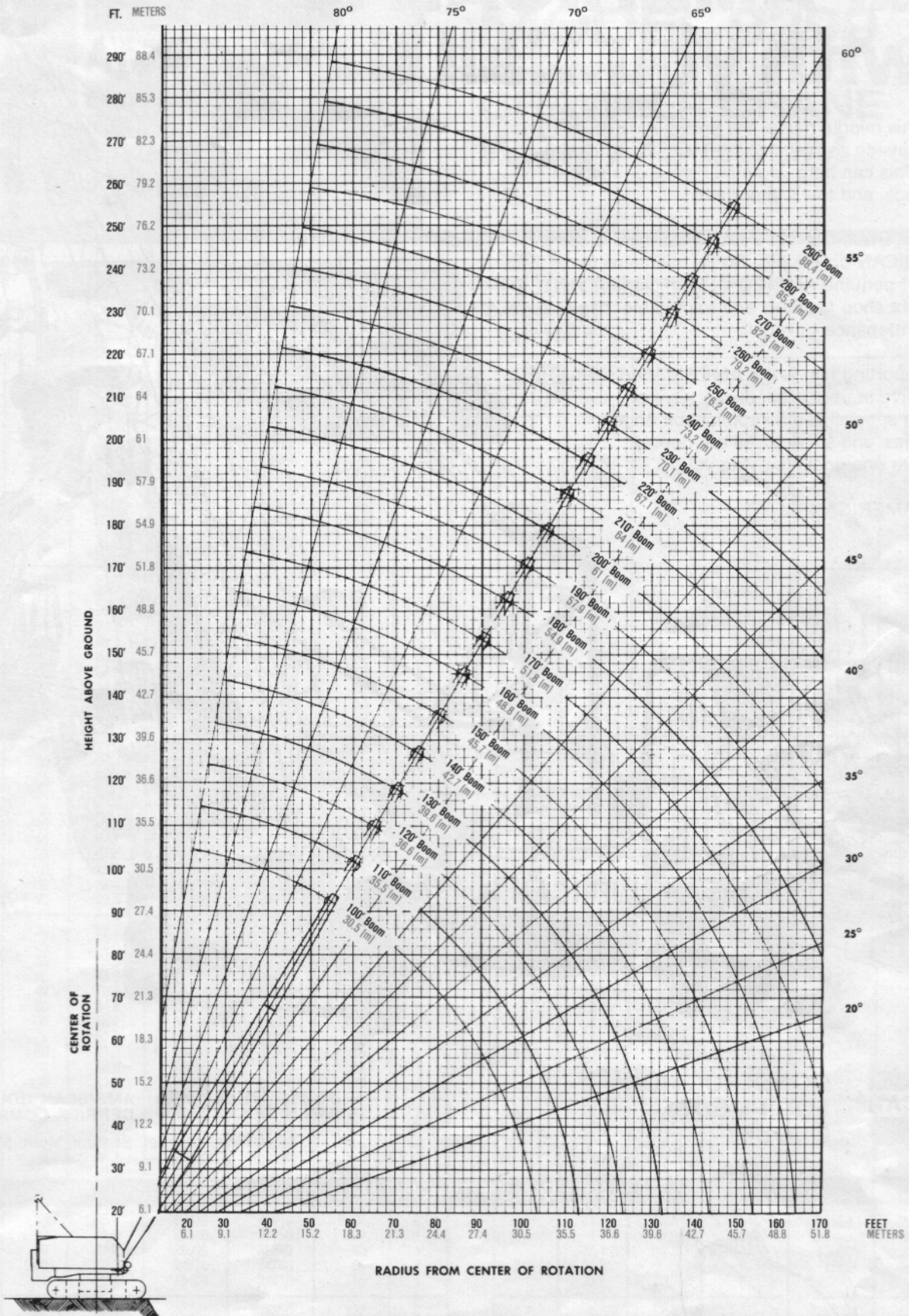
## WEIGHTS

	Lbs.	Kg.
Lifting crane with basic 70 ft. (21.3 m) 77S crane boom and 44" (13.4 m) shoes	314,250	142543
Components removable for shipment:		
Counterweight	105,000	47628
Boom outer and hammerhead	7,870	3569
Boom inner	2,540	1152
Telescopic boom stops	300	136
Outer bail assembly	2,450	1111
A-frame	3,900	1769
Side frames, 44" (13.4 m) shoes (2)	71,000	32205
Crawler axles (4)	11,680	5298
Torque tubes (2)	920	417
Carbody	24,200	10977

## GROUND PRESSURES

Lifting Crane (equipped as above) ... 13.45 PSI .09 kg/cm<sup>2</sup>

# BOOM ANGLE DIAGRAM



AMERICAN MODEL 9299 CRAWLER CRANE  
WORKING RANGES